

寄件者: Athena Pui Yin LAI/PLAND
寄件日期: 2026年06月05日星期五 17:57
收件者: tpbpd/PLAND
副本: Selena Yin Ni SIN/PLAND; Travis Tsz Ki KWOK/PLAND; Yen PY LEUNG/PLAND
主旨: Fw: A/YL-KTS/1134
附件: P.8.pdf; Drainage Assessment Report (1) (1).pdf; Plan (3).pdf

From: pang hingyeun <[REDACTED]>
Sent: Friday, June 5, 2026 3:36 PM
To: Athena Pui Yin LAI/PLAND <apylai@pland.gov.hk>; Selena Yin Ni SIN/PLAND <synsin@pland.gov.hk>
Subject: A/YL-KTS/1134

Dear Madam,

This email supersedes the one submitted on June 4, 2026, at 2:19 PM.

Please find the revised application form, the Drainage Assessment Report, and the related plans for your reference.

Thank you !

Regards,
H.Y.Pang

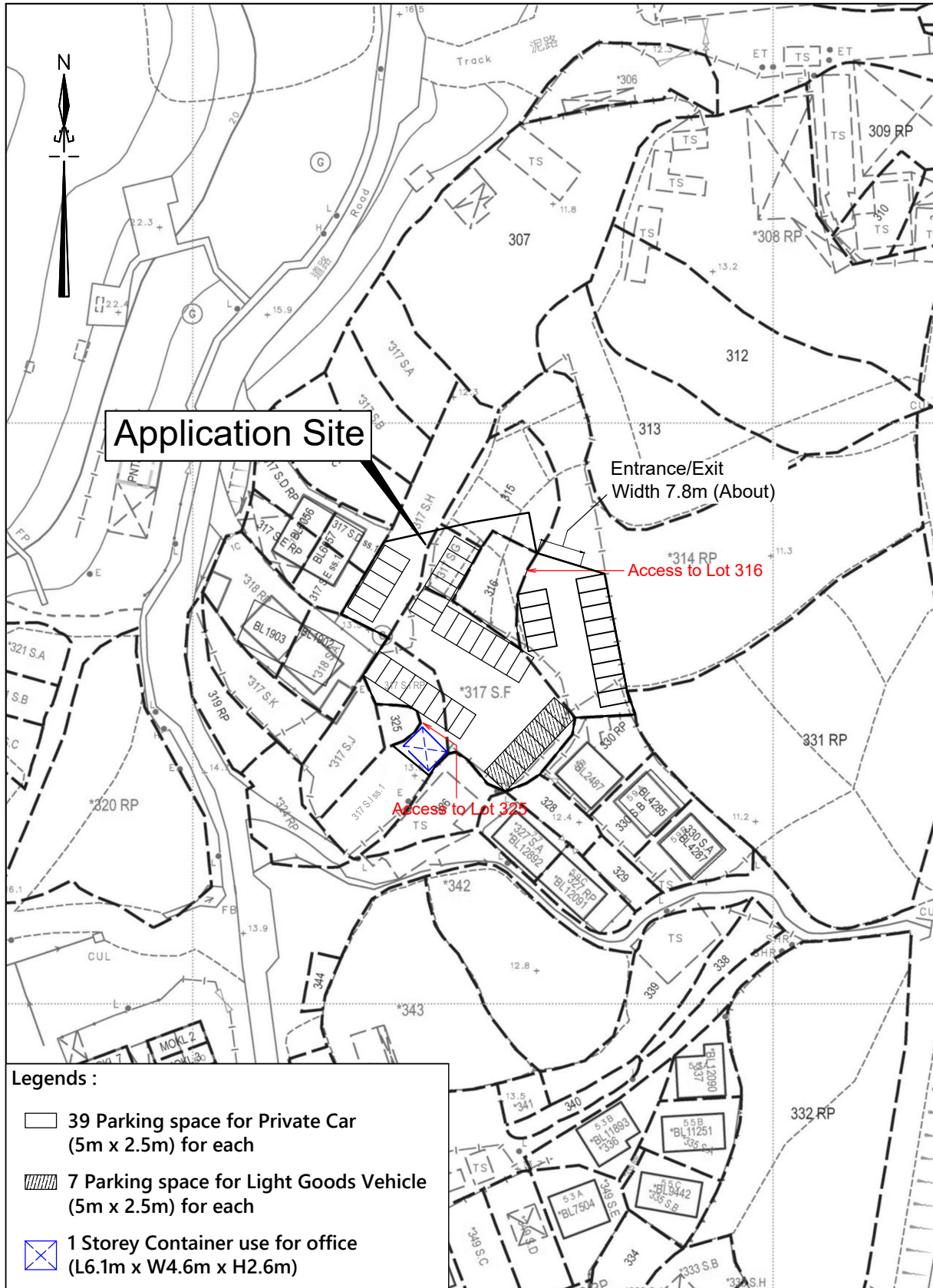
從 [Outlook](#) 傳送

7. Justifications 理由

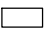


The applicant is invited to provide justifications in support of the application. Use separate sheets if necessary.
 現請申請人提供申請理由及支持其申請的資料。如有需要，請另頁說明。

1. 申請地點位于馬鞍崗村，附近亦有河背村及大𤇗村，而三條村並沒有政府公眾停車場，村內車位短缺。
2. 由於車位不足，每到晚上都會有車輛停泊在村路旁，影響道路使用者安全。
3. 申請地點只停泊私家車及輕型貨車，5.5 噸以上車輛不得停泊。
4. 申請地點合共45個車位，39個私家車位及6個輕型貨車位，而場內的車輛通道闊4.5米或以上，而入口闊約6.8米，因此有足夠空間及闊度給車輛行駛。
5. 申請地點只提供月租，不提供時租車位，因此不會因輪候車位而引至車輛於場外排隊，引至交通擠塞。
6. 申請地點主要提供給馬鞍崗村、河背村及大𤇗居民使用，外來人士不得使用有關車位。
7. 我們預計車輛流量每日約為30-35架次。
8. 申請地點現時有一條村路，連接錦河路，而村路段上設有多個避車處。
9. 申請地點位于近村口的位置，對於村內居民沒有太大影響。
10. 申請地點擬議1個構築物用作辦公室。
11. 申請地點東面為一條政府大型排水渠，可以足夠收集我們場地內的排水系統，不會因發展而引至水浸。
12. 村長及村民對於我們的申請都給予支持，主要原因可將村內車輛集中一點，騰空村內位置作其他用途。
13. 申請地點範圍內有兩幅私人土地給我們的場地圍繞著，即地段第316號及325號，若該兩地段的業主有需要，可隨時經過我們申請地點的出入通道，進出該兩地段。
14. 任何未根據《道路交通(車輛登記及領牌)規例》(第374E章)簽發有效牌照的車輛均不得進入申請地點。
15. 申請地點不准進行任何洗車、維修的活動。
16. 申請地點不准使用任何揚聲器。
17. 申請地點周邊會興建圍板，圍板約2m度，而圍板底部會預留0.2m空間作為疏導雨水。
18. 我們會遵守環保署的實務守則。

LAYOUT PLAN



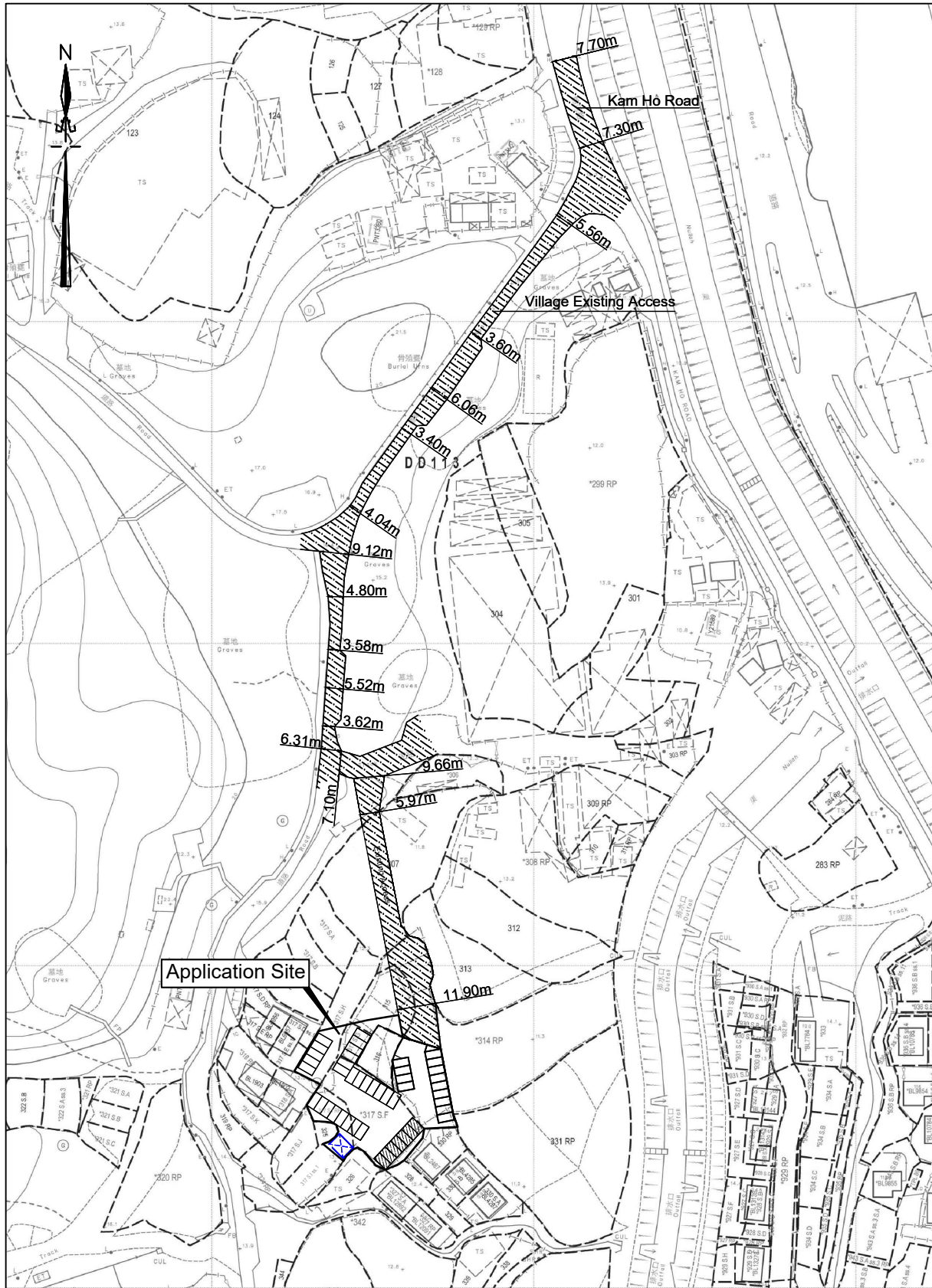
Legends :

-  39 Parking space for Private Car (5m x 2.5m) for each
-  7 Parking space for Light Goods Vehicle (5m x 2.5m) for each
-  1 Storey Container use for office (L6.1m x W4.6m x H2.6m)

卓 弘 測 量 服 務 公 司
CHUO WANG SURVEY SERVICES COMPANY

Scale : 1 : 1000
Survey Sheet No. : 6-NE-17D
6-NE-22B
Date : March 2026

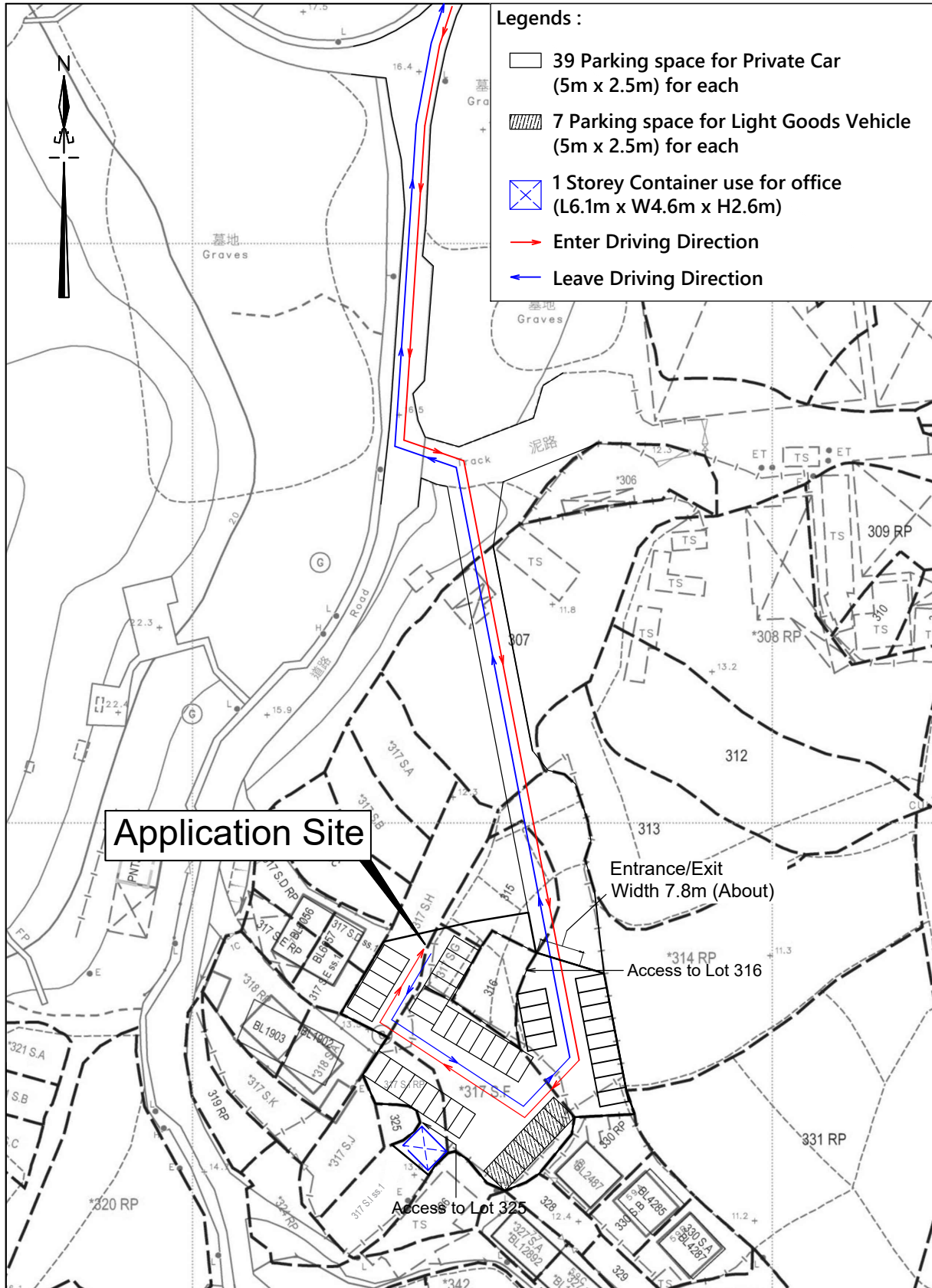
ACCESS PLAN



卓 弘 測 量 服 務 公 司
CHUO WANG SURVEY SERVICES COMPANY

Scale : Not to scale
Survey Sheet No. : 6-NE-17D
6-NE-22B
Date : March 2026

ROUTING PLAN



卓 弘 測 量 服 務 公 司
CHUO WANG SURVEY SERVICES COMPANY

Scale : 1 : 1000

Survey Sheet No. : 6-NE-17D
6-NE-22B

Date : March 2026

FILLING PLAN



卓弘測量服務公司
CHUO WANG SURVEY SERVICES COMPANY

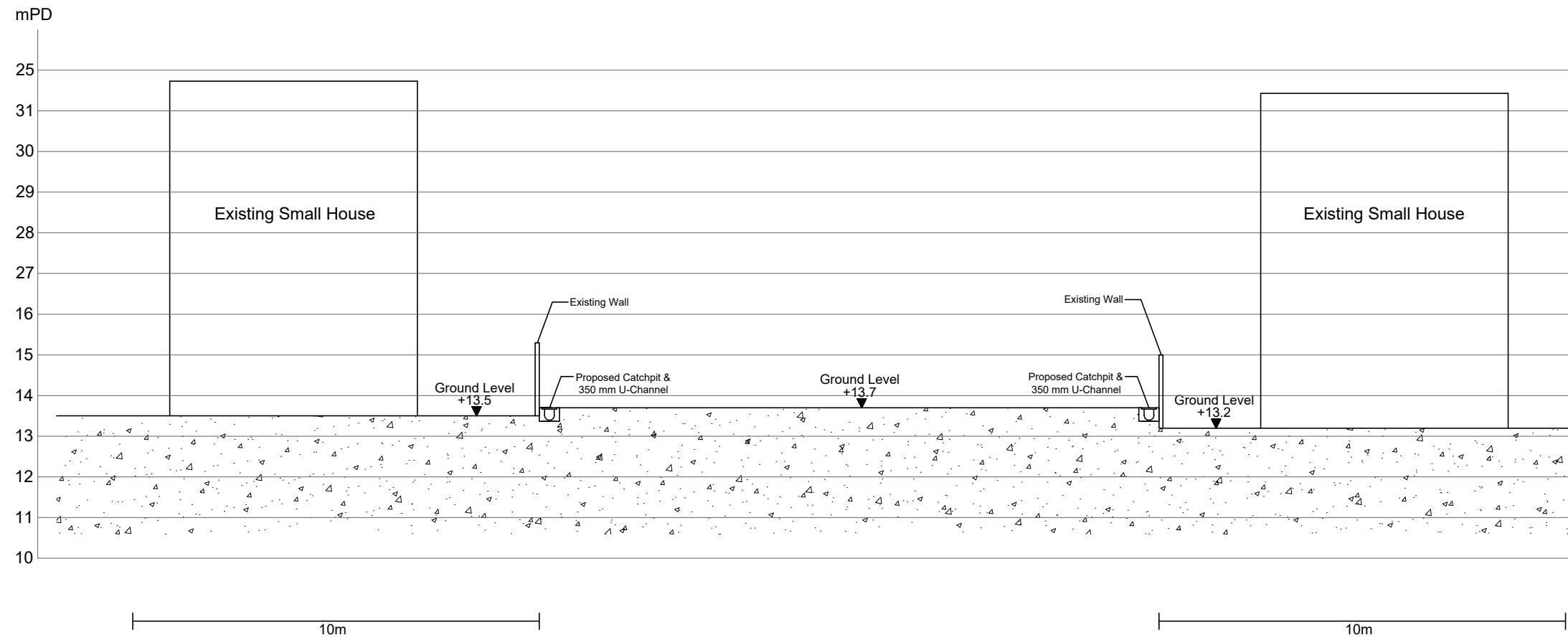
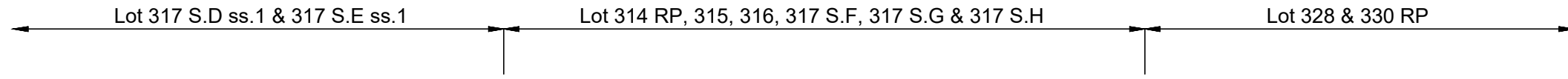
Scale : 1 : 1000
Survey Sheet No. : 6-NE-17D
6-NE-22B
Date : March 2026



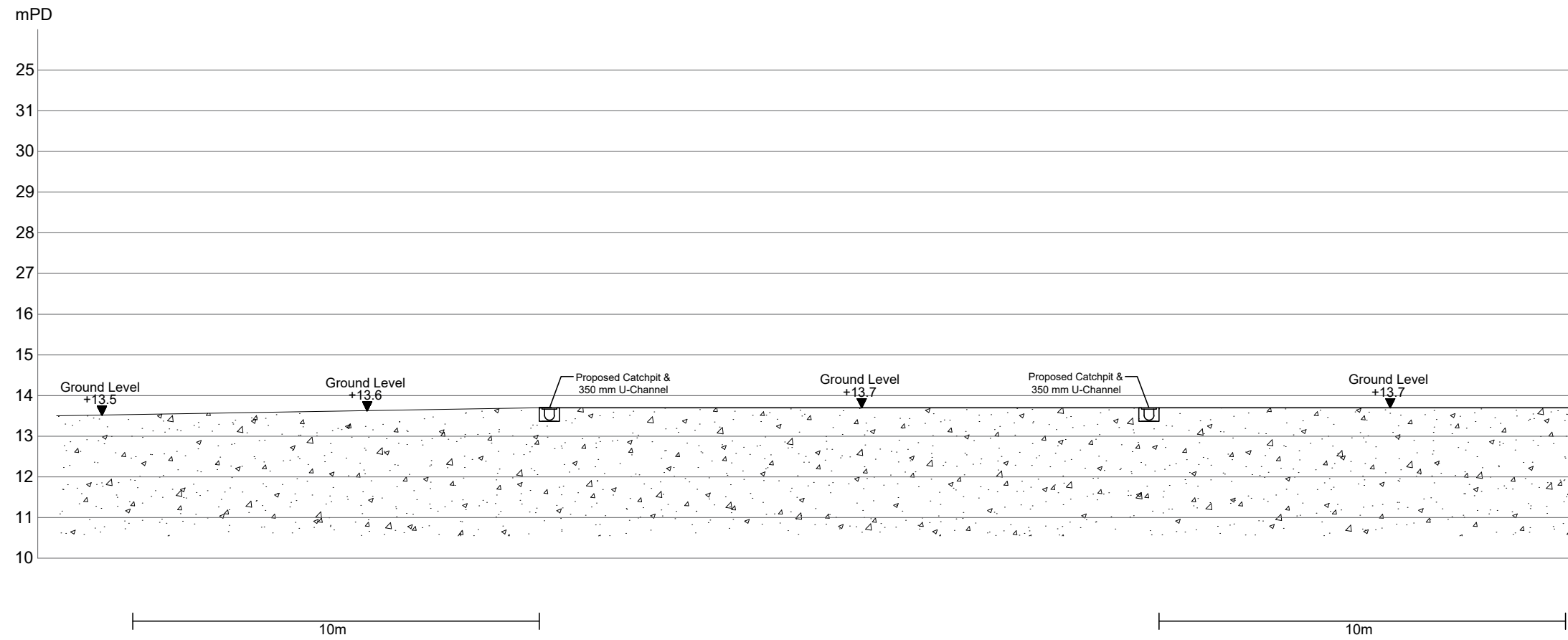
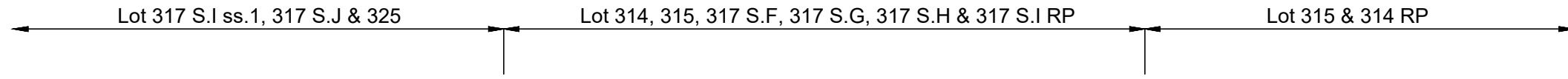
LEGEND :

 Application Site

Drawn	P.Y.KONG
Checked	H.Y.PANG
Project Title :	
Lot Nos. 314 RP (Part), 315 (Part), 317 S.F, 317 S.G (Part), 317 S.H (Part) & 317 S.I RP in D.D. 113, Ma On Kong, Pat Heung,	
Plan Title :	
Cross Section	
Plan No. :	Scale :
CW/DN/113/317/CS/01	1 : 400
	Date :
	23-03-2026
卓 弘 測 量 服 務 公 司 CHUO WANG SURVEY SERVICES COMPANY	



Drawn	P.Y.KONG
Checked	H.Y.PANG
Project Title :	
Lot Nos. 314 RP (Part), 315 (Part), 317 S.F, 317 S.G (Part), 317 S.H (Part) & 317 S.I RP in D.D. 113, Ma On Kong, Pat Heung,	
Plan Title :	
Section A - A	
Plan No. :	Scale :
CW/DN/113/317/CS/02	Not To Scale
	Date :
	23-03-2026
卓 弘 測 量 服 務 公 司 CHUO WANG SURVEY SERVICES COMPANY	



Drawn	P.Y.KONG
Checked	H.Y.PANG
Project Title :	
Lot Nos. 314 RP (Part), 315 (Part), 317 S.F, 317 S.G (Part), 317 S.H (Part) & 317 S.I RP in D.D. 113, Ma On Kong, Pat Heung,	
Plan Title :	
Section B - B	
Plan No. :	Scale :
CW/DN/113/317/CS/03	Not To Scale
	Date :
	23-03-2026
卓 弘 測 量 服 務 公 司 CHUO WANG SURVEY SERVICES COMPANY	

Drainage Assessment Report

Project:

Car Park Development

Location:

DD 113 Lot 307

1. Introduction

The report aims in checking the capacity of the 375mm UC for stormwater management.

2. Catchment Area and Runoff Calculation

- **Total Site Catchment Area** (1) : 2855.3 m² (0.0028553 km²)
- **Design Rainfall Intensity:** 250 mm/hr
- **Runoff Coefficient:** 0.95
- **Peak Runoff Calculation:**

$$Q = 0.278 \times C \times I \times A$$

$$Q = 0.278 \times 0.95 \times 250 \times 0.0028553$$

$$Q = 0.189 \text{ m}^3/\text{s}$$

$$Q = 11340 \text{ L}/\text{min}$$

3. Channel Design Justification

- **Selected Channel:** 300UC
- **Gradient:** 1:100
- **Reference Design Chart:** Figure 8.7 – Rapid Design of Channels
- **Suitability:**

Based on the chart, a 375UC are adequate to convey the peak runoff of 11340L/min at a gradient of 1:100

(375UC with 1:100 = 18000 L/min)

1. Introduction

The report aims in checking the capacity of the 450mm UC for stormwater management.

2. Catchment Area and Runoff Calculation

- **Total Site Catchment Area (1+2) :** 6012.1 m² (0.0060121 km²)
- **Design Rainfall Intensity:** 250 mm/hr
- **Runoff Coefficient:** 0.95
- **Peak Runoff Calculation:**

$$Q = 0.278 \times C \times I \times A$$

$$Q = 0.278 \times 0.95 \times 250 \times 0.0060121$$

$$Q = 0.397 \text{ m}^3/\text{s}$$

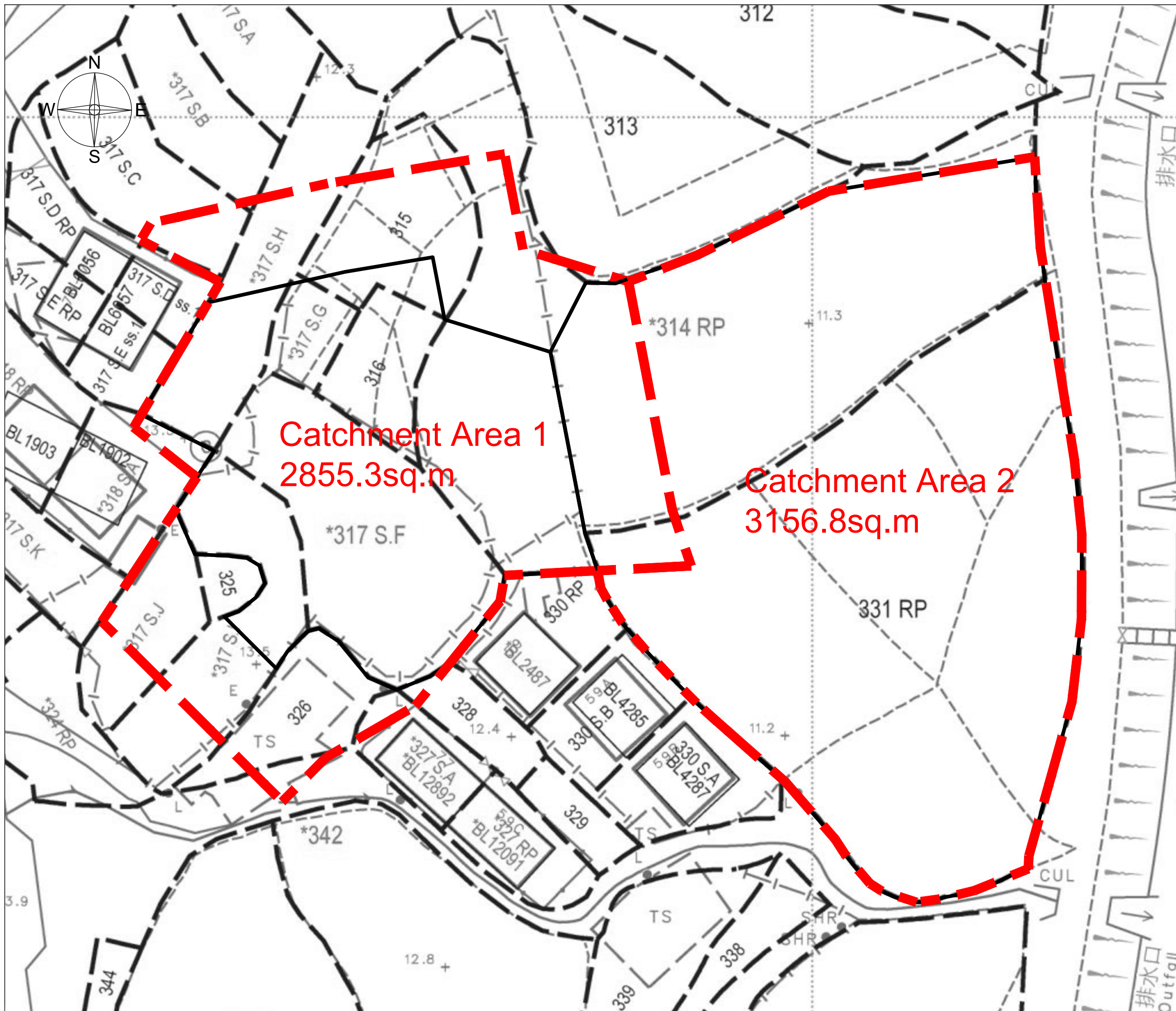
$$Q = 23820 \text{ L/min}$$

3. Channel Design Justification

- **Selected Channel:** 450UC
- **Gradient:** 1:100
- **Reference Design Chart:** Figure 8.7 – Rapid Design of Channels
- **Suitability:**

Based on the chart, a 450UC are adequate to convey the peak runoff of 23820L/min at a gradient of 1:100

(450UC with 1:100 = 27000 L/min)



Catchment Area 1
2855.3sq.m

Catchment Area 2
3156.8sq.m

LEGEND :

 Catchment Area

Drawn	P.Y.KONG
Checked	H.Y.PANG
Project Title :	
Lot Nos. 314 RP (Part), 315 (Part), 317 S.F, 317 S.G (Part), 317 S.H (Part) & 317 S.I RP in D.D. 113, Ma On Kong, Pat Heung,	
Plan Title :	
Catchment Area	
Plan No. :	Scale :
CW/DN/113/317/CA/01	1 : 400
	Date :
	23-03-2026
卓 弘 測 量 服 務 公 司 CHUO WANG SURVEY SERVICES COMPANY	

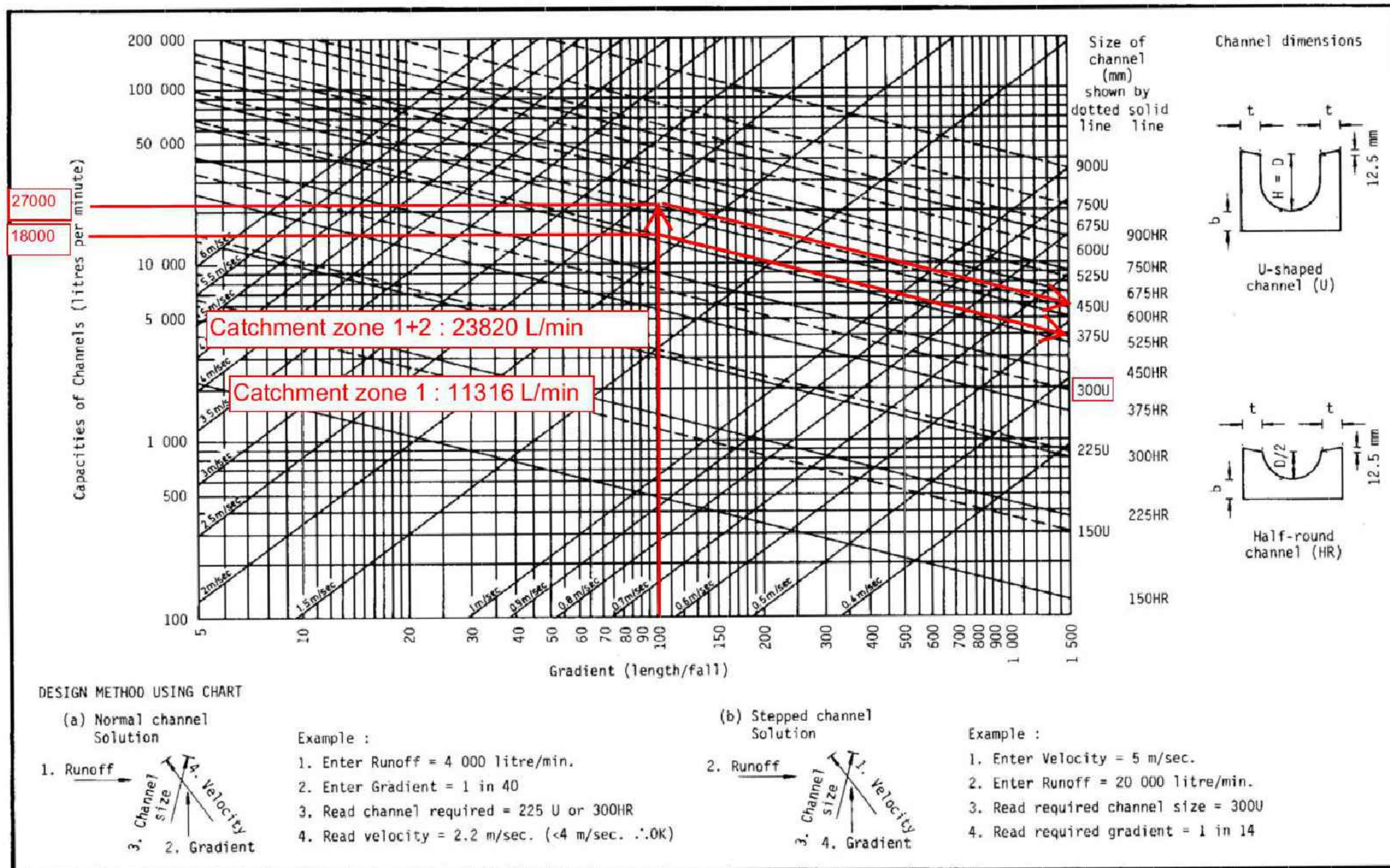
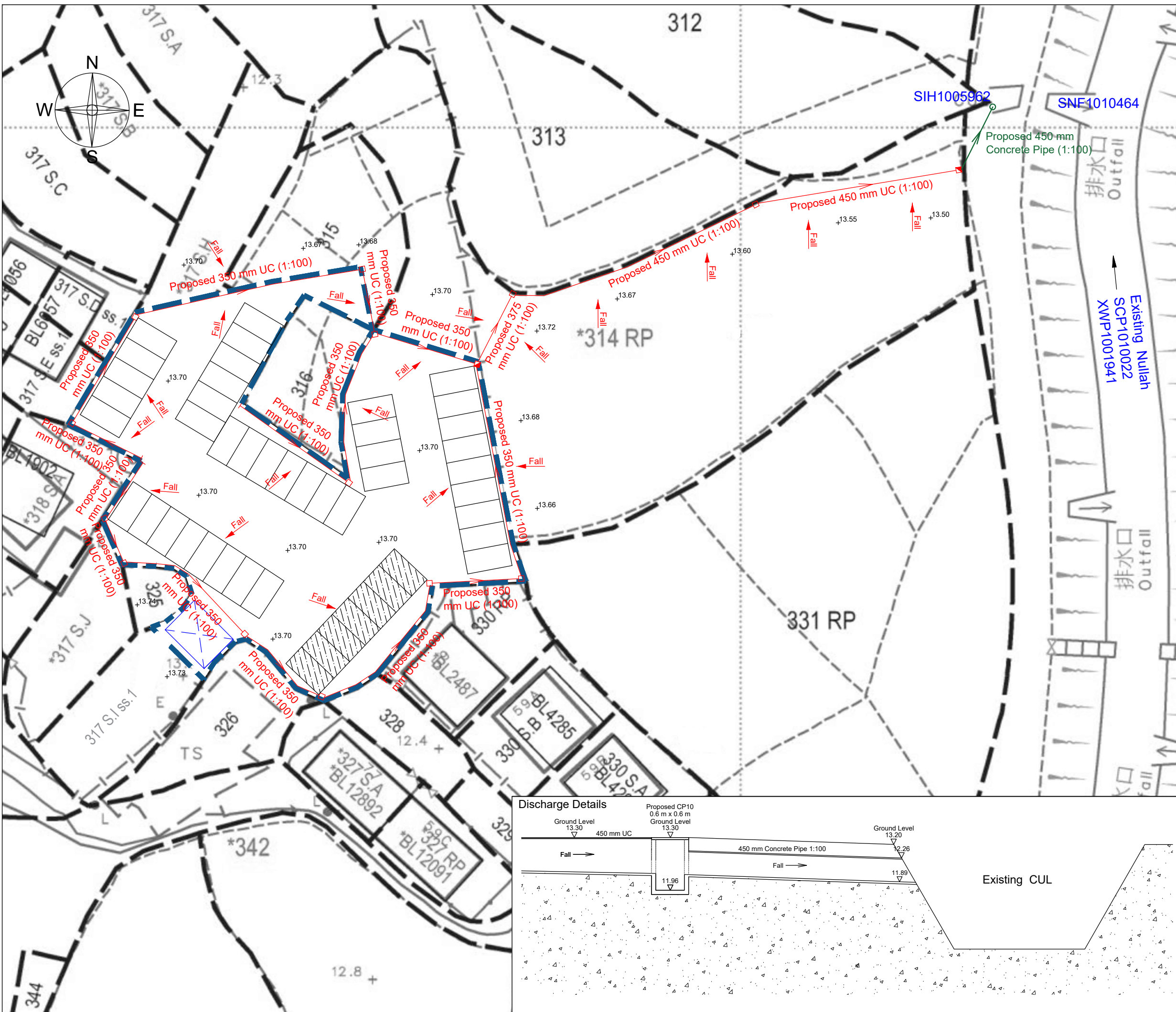


Figure 8.7 - Chart for the Rapid Design of Channels



LEGEND :

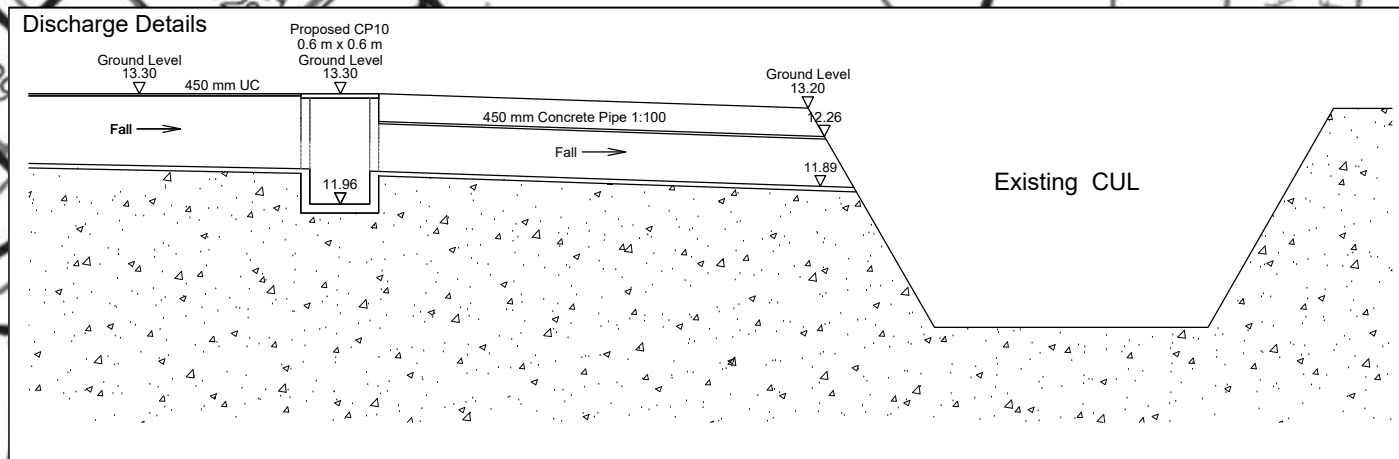
- Application Site
- Proposed 350 mm, 375 mm & 450 mm UC (1:100) with cast iron grating
- Proposed Catchpit with trap and with concrete cover
- Fall
- Catchpit with sand trap and with concrete cover
- Proposed 375 mm Concrete Pipe
- Existing Nullah
- Existing Catchpit
- Existing Spot Level
- Stormwater Fall Direction
- Parking space for Private Car (5m x 2.5m) for each
- Parking space for Light Goods Vehicle (5m x 2.5m) for each
- 1 Storey Container use for office (L6.1m x W4.6m x H2.6m)

Drawn	P.Y.KONG
Checked	H.Y.PANG

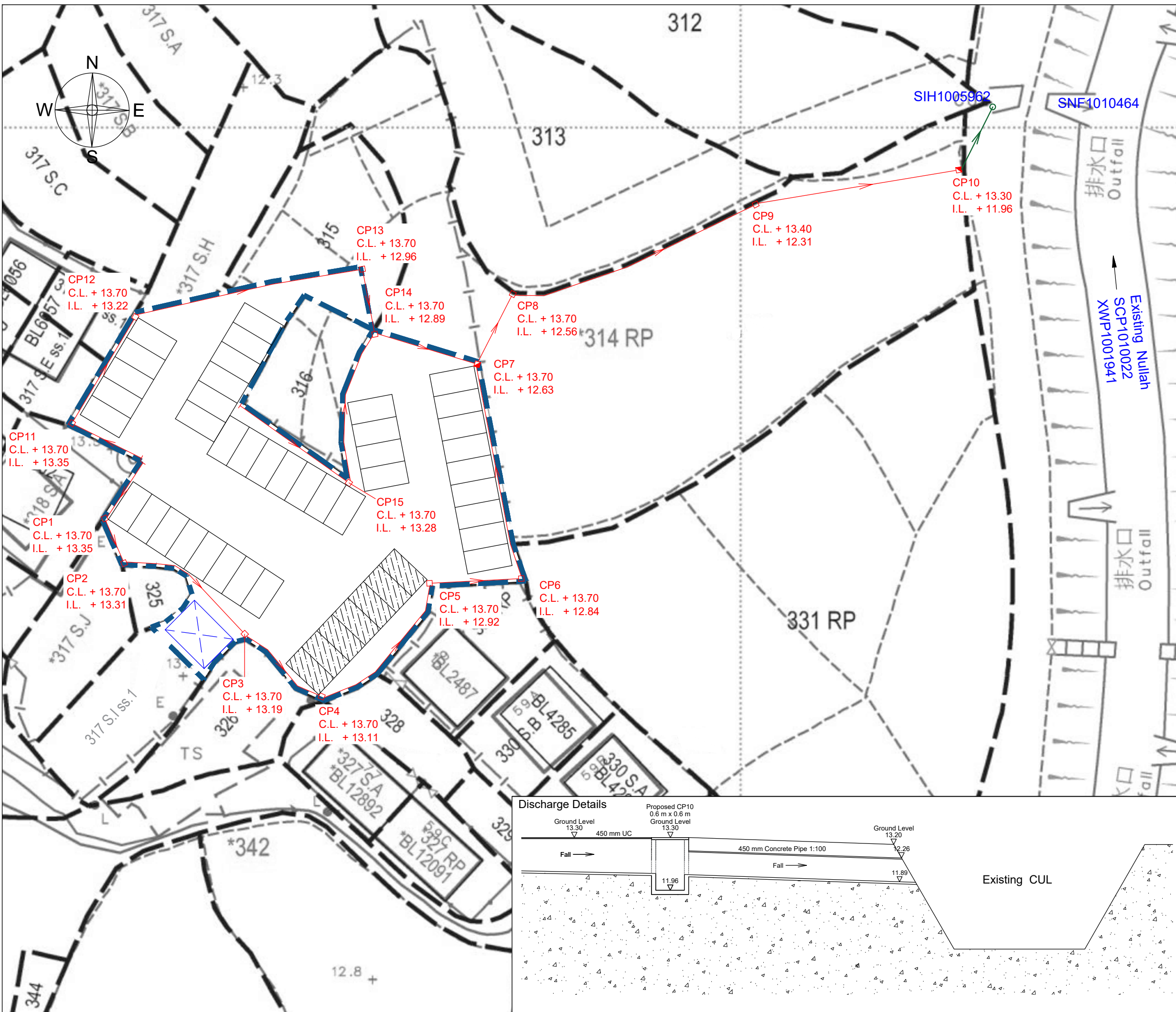
Project Title :
 Lot Nos. 314 RP (Part), 315 (Part), 317 S.F, 317 S.G (Part), 317 S.H (Part) & 317 S.I RP in D.D. 113, Ma On Kong, Pat Heung,

Plan Title :
 Proposed Stormwater Drainage Plan

Plan No. :	Scale :
CW/DN/113/317/DP/01	1 : 400
	Date :
	23-03-2026



卓弘測量服務公司
 CHUO WANG SURVEY SERVICES COMPANY



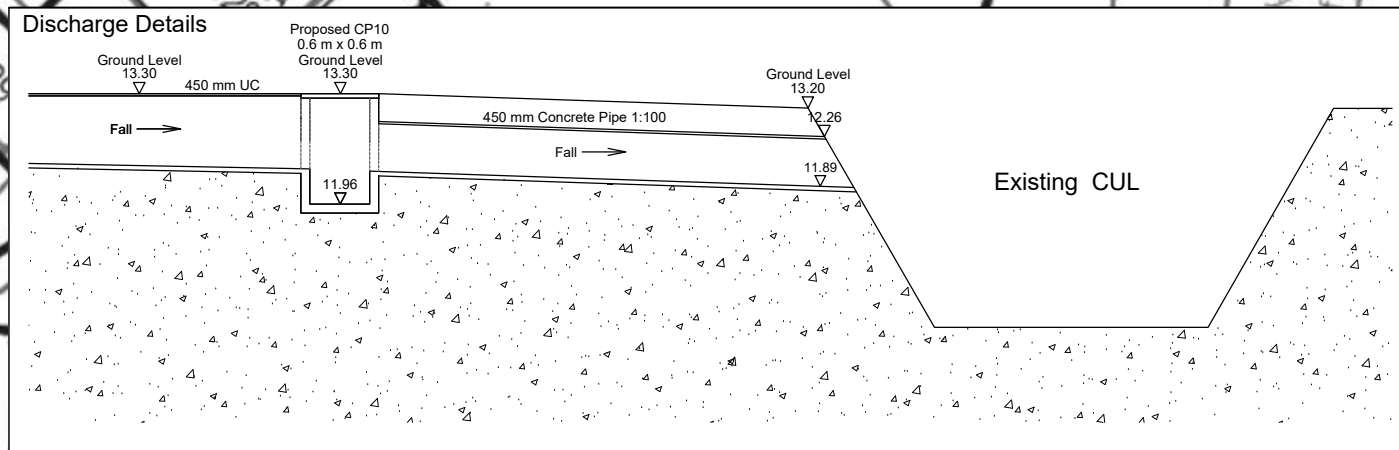
- LEGEND :**
- Application Site
 - Proposed 350 mm, 375 mm & 450 mm UC (1:100) with cast iron grating
 - Proposed Catchpit with trap and with concrete cover
 - Fall
 - Catchpit with sand trap and with concrete cover
 - Proposed 375 mm Concrete Pipe
 - Existing Nullah
 - Existing Catchpit
 - Existing Spot Level
 - Stormwater Fall Direction
 - Parking space for Private Car (5m x 2.5m) for each
 - Parking space for Light Goods Vehicle (5m x 2.5m) for each
 - 1 Storey Container use for office (L6.1m x W4.6m x H2.6m)

Drawn	P.Y.KONG
Checked	H.Y.PANG

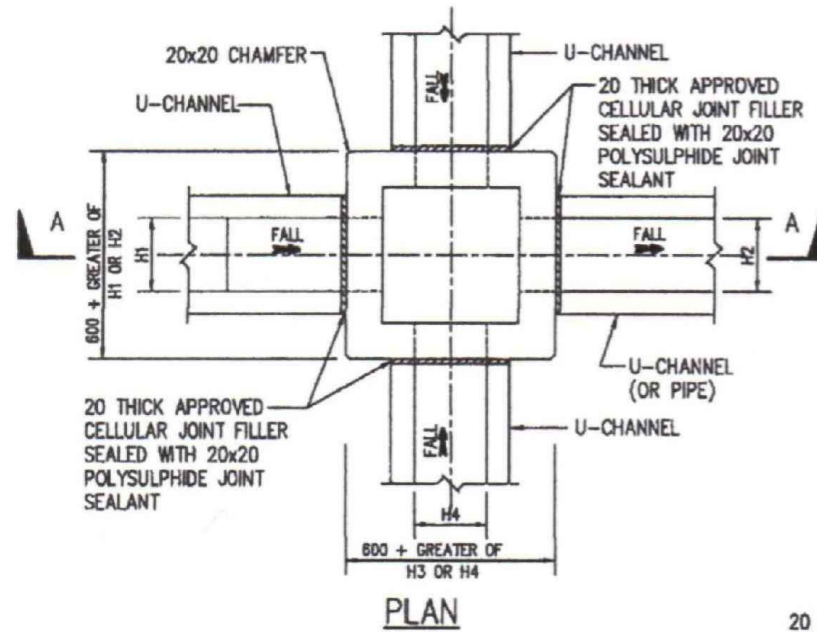
Project Title :
 Lot Nos. 314 RP (Part), 315 (Part), 317 S.F, 317 S.G (Part), 317 S.H (Part) & 317 S.I RP in D.D. 113, Ma On Kong, Pat Heung,

Plan Title :
 Proposed Stormwater Drainage Plan

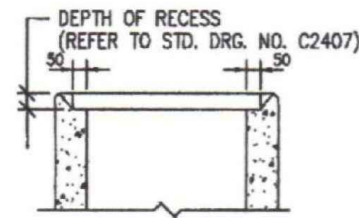
Plan No. :	Scale :
CW/DN/113/317/DP/02	1 : 400
	Date :
	23-03-2026



卓弘測量服務公司
 CHUO WANG SURVEY SERVICES COMPANY

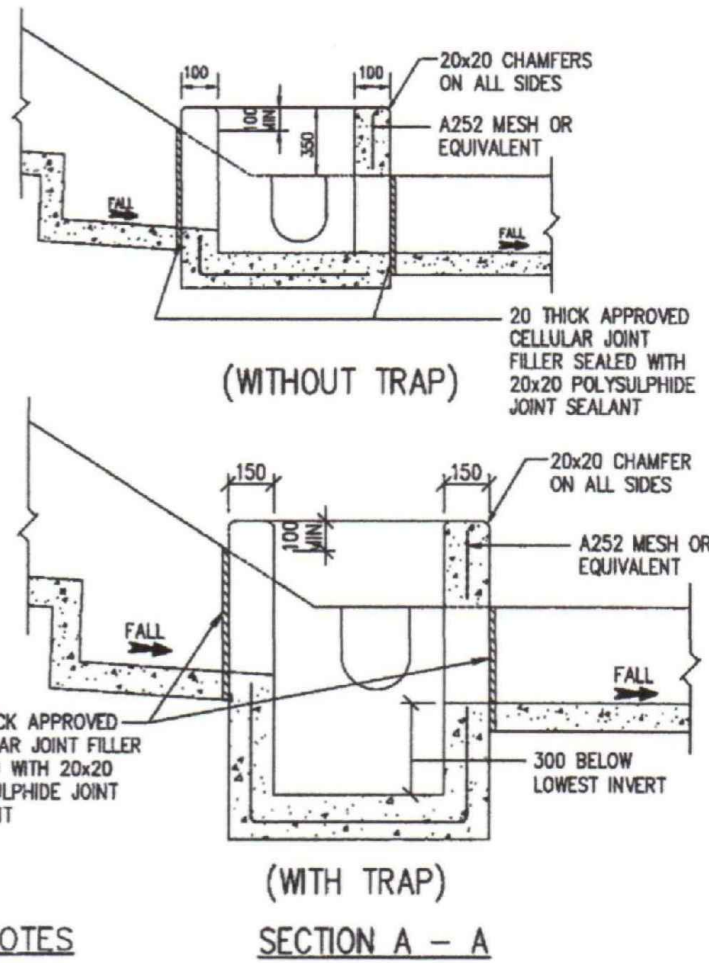


PLAN

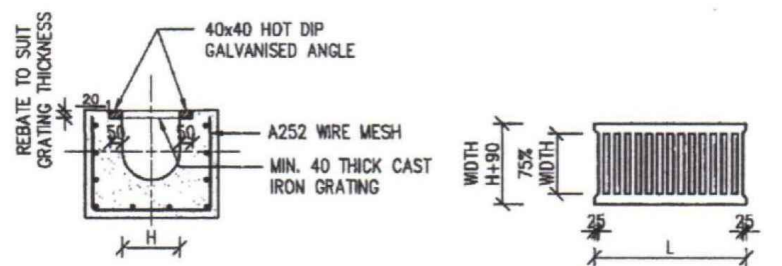


ALTERNATIVE TOP SECTION FOR PRECAST CONCRETE COVER

STANDARD CATCHPIT DETAILS (ACCORDING TO CEDD'S DRAWING NO. C2405I & 2406I)



- NOTES
- (1) ALL DIMENSIONS ARE IN MILLIMETRES.
- (2) SIZE - DEPTH : $D < 750$
 WIDTH : $W > 3B$
 LENGTH : $L = 4.8D^{0.67} h^{0.5} F^{-0.5} > 4B$
- (3) GRADED STONE FILTER SHALL BE CRUSHER RUN GRANITE AGGREGATE.
- (4) THE SANDTRAP SHALL BE REGULARLY DESILTED TO AVOID BLOCKAGE.



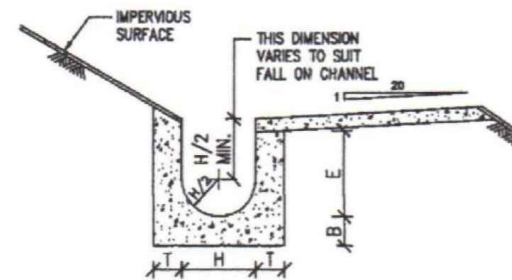
TYPICAL SECTION CAST IRON GRATING

(DIMENSIONS ARE FOR GUIDANCE ONLY, CONTRACTOR MAY SUBMIT EQUIVALENT TYPE)

U-CHANNEL WITH CAST IRON GRATING

(UP TO H OF 525)

(ACCORDING TO CEDD'S DRAWING NO. C2412E)



NOMINAL SIZE (h)	T	B	REINFORCEMENT
225-300	80	100	A252 MESH PLACED CENTRALLY AND T=100
375-800	100	150	WHEN E>650
675-900	100	150	A252 MESH PLACED CENTRALLY

TYPICAL U-CHANNEL DETAILS (ACCORDING TO CEDD'S DRAWING NO. C2410G) N.T.S.

NOTES FOR U-CHANNEL

- THE COVER OF PROPOSED U-CHANNEL SHALL BE FLUSH WITH THE PATH SURFACE AND ANY HOLE IN SUCH COVER SHALL NOT EXCEED 20mm IN ONE DIMENSION.
- CAST IRON GRATINGS TO BE USED SHALL BE COMPLIANCE WITH BS 437:2008.

Project Title :

Lot Nos. 314 RP (Part), 315 (Part), 317 S.F, 317 S.G (Part), 317 S.H (Part) & 317 S.I RP in D.D. 113, Ma On Kong, Pat Heung,

Plan Title :

Proposed Stormwater Drainage Plan

Plan No. :

CW/DN/113/317/DP/03

Scale :

1 : 400

Date :

23-03-2026

卓 弘 測 量 服 務 公 司
 CHUO WANG SURVEY SERVICES COMPANY



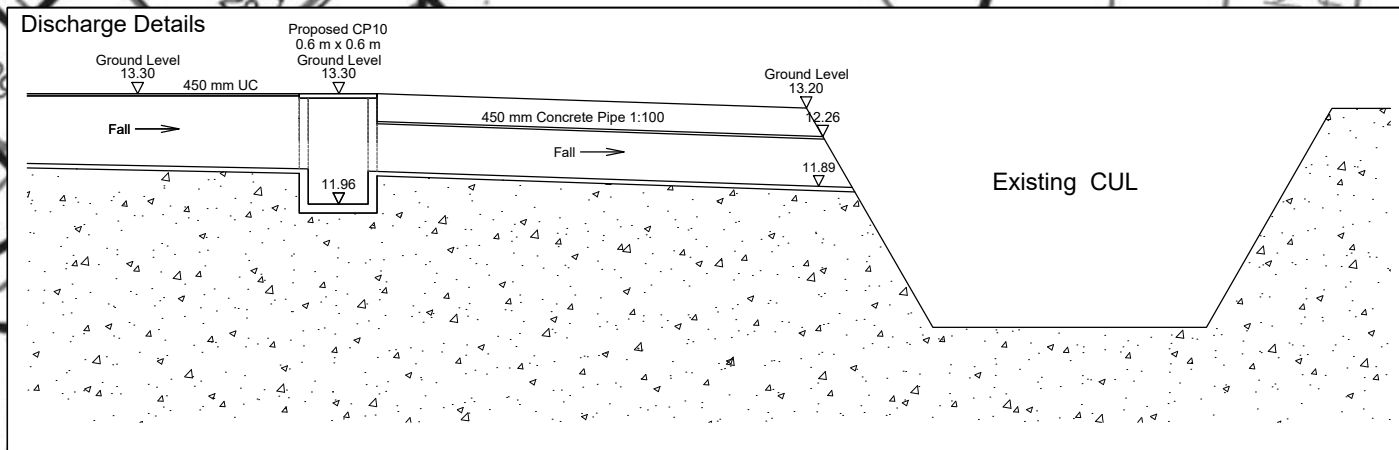
- LEGEND :**
- Application Site
 - Proposed 350 mm, 375 mm & 450 mm UC (1:100) with cast iron grating
 - Proposed Catchpit with trap and with concrete cover
 - Fall
 - Catchpit with sand trap and with concrete cover
 - Proposed 375 mm Concrete Pipe
 - Existing Nullah
 - Existing Catchpit
 - Existing Spot Level
 - Stormwater Fall Direction
 - Parking space for Private Car (5m x 2.5m) for each
 - Parking space for Light Goods Vehicle (5m x 2.5m) for each
 - 1 Storey Container use for office (L6.1m x W4.6m x H2.6m)

Drawn	P.Y.KONG
Checked	H.Y.PANG

Project Title :
 Lot Nos. 314 RP (Part), 315 (Part), 317 S.F, 317 S.G (Part), 317 S.H (Part) & 317 S.I RP in D.D. 113, Ma On Kong, Pat Heung,

Plan Title :
 Proposed Stormwater Drainage Plan

Plan No. :	Scale :
CW/DN/113/317/DP/04	1 : 400
	Date :
	23-03-2026



卓弘測量服務公司
 CHUO WANG SURVEY SERVICES COMPANY